

TARA Bath spout for wall mounting - Brushed Dark Platinum

TARA

13 801 892



- 200mm projection
- circular normal flow
- rosette Ø 55 mm
- hole diameter 37 mm
- 1/2" connection
- max. flow 29 l/min at 3 bar flow pressure
- WRAS 1811020

	Brushed Dark Platinum	13 801 892-99
	Chrome	13 801 892-00
	Brushed Platinum	13 801 892-06
	Platinum	13 801 892-08
	Dark Chrome	13 801 892-19
	Brushed Durabronze (23kt Gold)	13 801 892-28
	Matte Black	13 801 892-33
	Brushed Champagne (22kt Gold)	13 801 892-46
	Champagne (22kt Gold)	13 801 892-47
	Brushed Chrome	13 801 892-93

Required miscellaneous

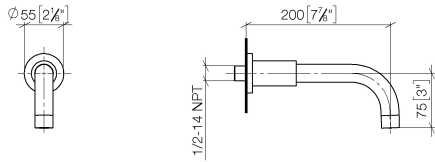
Concealed adapter -

35 080 970-90
0010

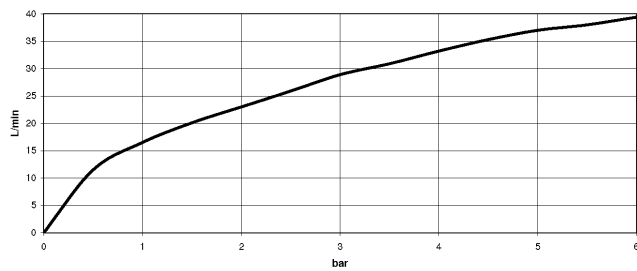


13 801 892

mm [inches]



Flow rate chart



Codes & Standards

ASME
A112.18.1/CSA
B125.1



TARA Bath spout for wall mounting - Brushed Dark Platinum

TARA

13 801 892

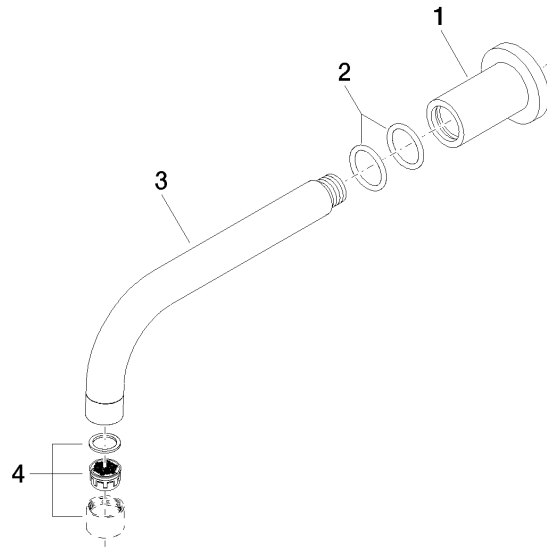
Certificates

LGA_18923.

WRAS_1811020.

IAPMO_4976 (4).

13 801 892



Spare parts list

No.	Item Number	Name	Quantity used	Delivery time
1	09 27 89 009-99	rosette	1	30
2	90 14 10 025 00 90	seal	2	2
3	04 28 22 198 20-99	spout	1	30
4	90 23 01 024 00-99	aerator	1	30